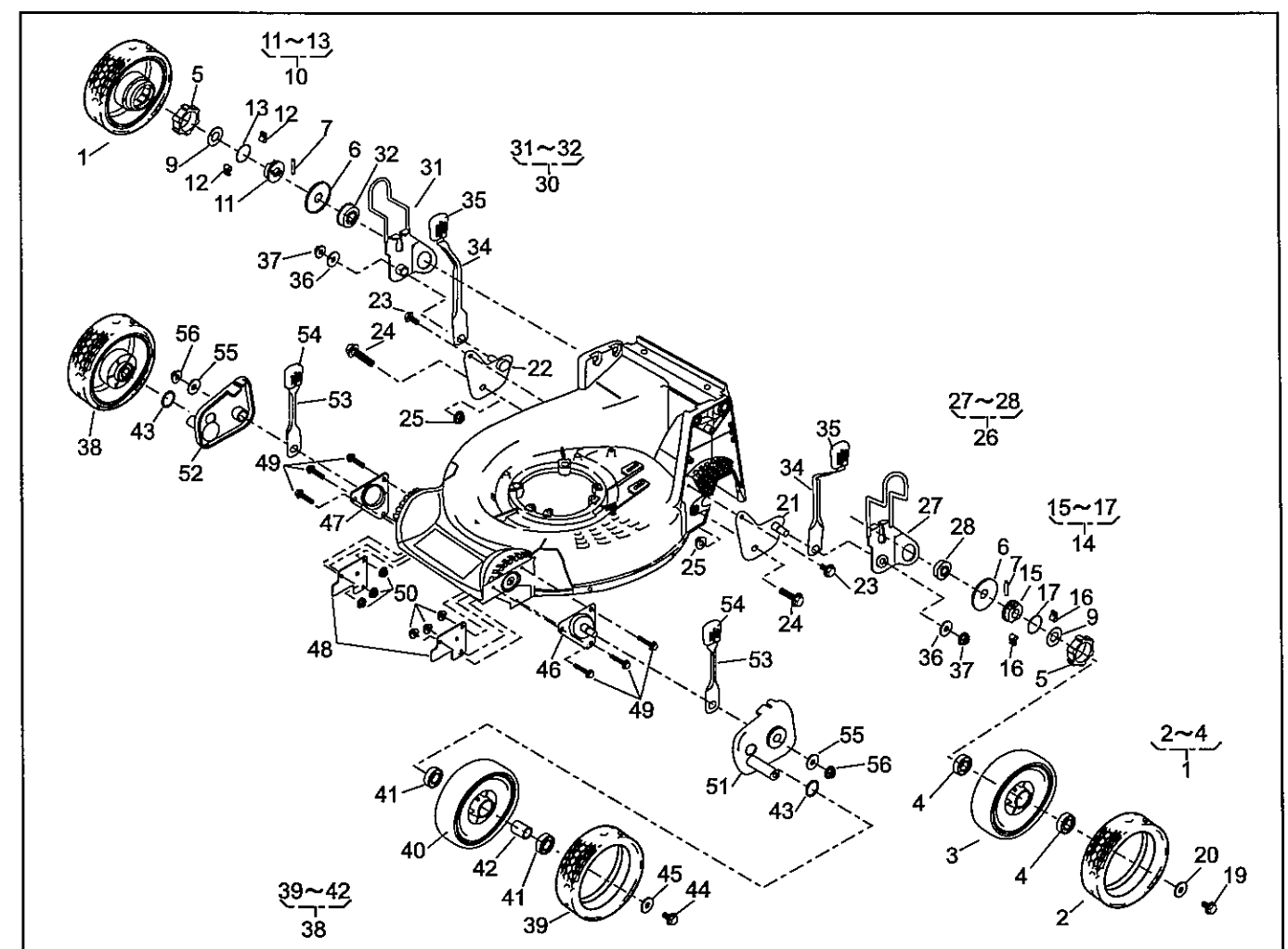


PARTS LIST
MODEL : SLM5360HXA-HST (SARP)

46014-***

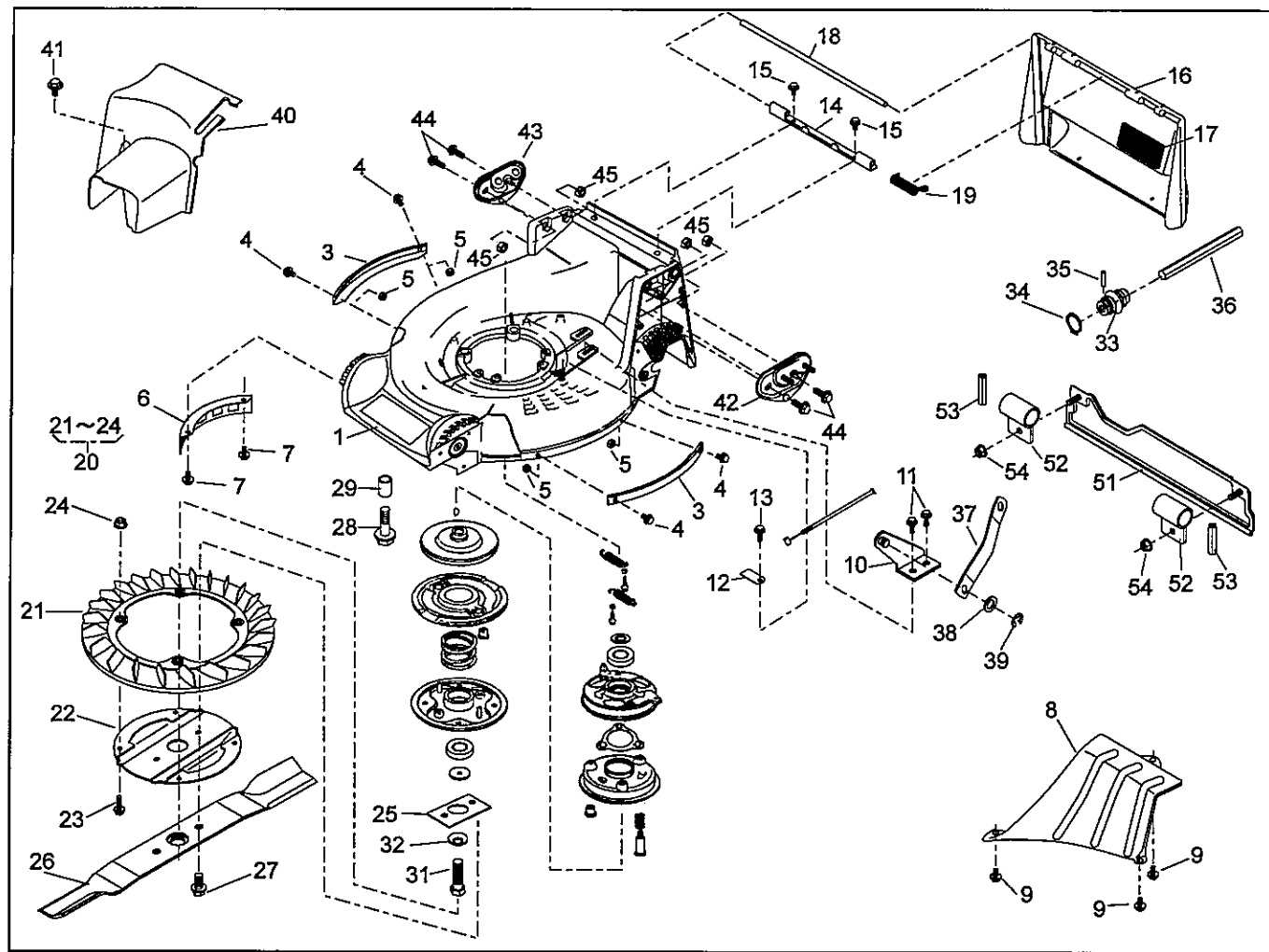
REF. No.	PARTS No.	PARTS NAME	8"AI-WHEEL		1/2	RECOMM.(%) Lot.100	REMARKS
			Q'TY INCLUDING	PRICE()			
1	71041 136	WHEEL ASSY(A.W.)	2				
2	91086 113	TIRE	2				
3		WHEEL	2				
4	916B 6002	BEARING	4				
5	11086 119	STOPPER	2				
6	61003 112	THRUST PLATE	2				
7	31034 137	PIN	2				
8							
9	68036 146	WASHER	2				
10	71158 101	RATCHET ASSY(R)	1				
11	11102 138	HOLDER	1				
12	31034 170	PIN	2				
13	68013 266	SPRING	1				
14	71158 102	RATCHET ASSY(L)	1				
15	11102 138	HOLDER	1				
16	31034 170	PIN	2				
17	68013 266	SPRING	1				
18							
19	31057 181	HEXAGON BOLT	2				
20	68036 101	WASHER	2				
21	11006 151	STAY C.P.(RL)	1				
22	11006 152	STAY C.P.(RR)	1				
23	342L 0612	FLANGE BOLT TAPPING	2				
24	31057 255	HEXAGON BOLT	2				
25	569L 0800	FLANGE NYLON NUT	2				
26	71122 112	ADJUSTER ASSY(L)	1				
27	11142 131	ADJUSTER(RL)	1				
28	945L 0349	BEARING	1				



PARTS LIST
MODEL : SLM5360HXA-HST (SARP)

46014-***

REF. No.	PARTS No.	PARTS NAME	8"AI-WHEEL		2/2	RECOMM.(%) Lot.100	REMARKS
			Q'TY INCLUDING	PRICE()			
29							
30	71122 113	ADJUSTER ASSY(R)	1				
31	11142 132	ADJUSTER(RR)	1				
32	945L 0349	BEARING	1				
33							
34	11150 105 09	ADJUST LEVER	2				
35	36061 121	KNOB	2				
36	613L 0800	WASHER	2				
37	569L 0800	FLANGE NYLON NUT	2				
38	71041 135	WHEEL ASSY(A.W.)	2				
39	91086 113	TIRE	2				
40		WHEEL	2				
41	916B 6002	BEARING	4				
42	11083 332	COLLAR	2				
43	51113 119	RING	2				
44	31057 181	HEXAGON BOLT	2				
45	68036 101	WASHER	2				
46	11006 153	STAY C.P.(FL)	1				
47	11006 154	STAY C.P.(FR)	1				
48	11113 409	STAY	2				
49	335L 0625	FLANGE BOLT	6				
50	569L 0600	FLANGE NYLON NUT	6				
51	11142 129	ADJUSTER(FL)	1				
52	11142 130	ADJUSTER(FR)	1				
53	11150 106 09	ADJUST LEVER	2				
54	36061 121	KNOB	2				
55	613L 0800	WASHER	2				
56	569L 0800	FLANGE NYLON NUT	2				

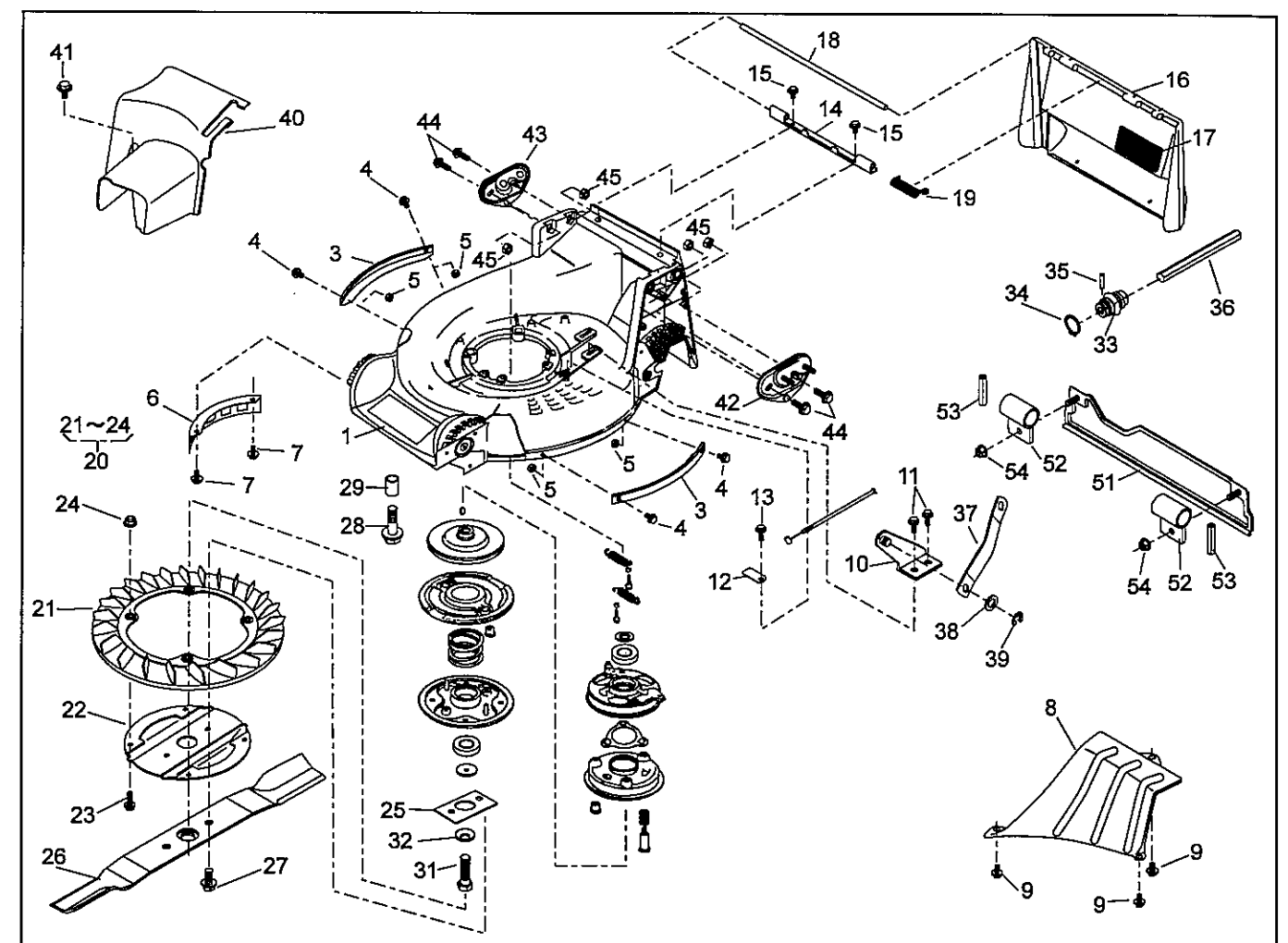


PARTS LIST

MODEL : SLM5360HXA-HST (Production 2004)

46014-***

REF. No.	PARTS No.	PARTS NAME	HST		1/2	Dec.24,2004
			Q'TY INCLUDING	PRICE()		
1	51043 147 42	HOUSING	1			
2						
3	51090 117 09	PROTECTOR	2			
4	335L 0616	FLANGE BOLT	4			
5	512L 0600	HEXAGON NUT	4			
6	36065 180	COVER	1			
7	342L 0612	FLANGE BOLT TAPPING	2			
8	36065 436	COVER	1			
9	342L 0612	FLANGE BOLT TAPPING	3			
10	11006 155	STAY C.P.	1			
11	342L 0612	FLANGE BOLT TAPPING	2			
12	11113 407	STAY	1			
13	342L 0612	FLANGE BOLT TAPPING	1			
14	11113 292	STAY	1			
15	342L 0612	FLANGE BOLT TAPPING	2			
16	36068 196 46	GUARD	1			
17	36080 149	RUBBER SHEET	1			
18	64014 324	SHAFT	1			
19	68013 336	SPRING	1			
20	71082 111	FAN ASSY	1			
21	51125 103	FAN	1			
22	11102 151	HOLDER	1			
23	31062 169	PRE-COAT LOCK BOLT	4			
24	579L 0600	FLANGE NUT	4			
25	61024 208	SPACER	1			
26	91014 159 59	BLADE	1			
27	31057 197	HEXAGON BOLT	2			
28	31057 243	HEXAGON BOLT	4			

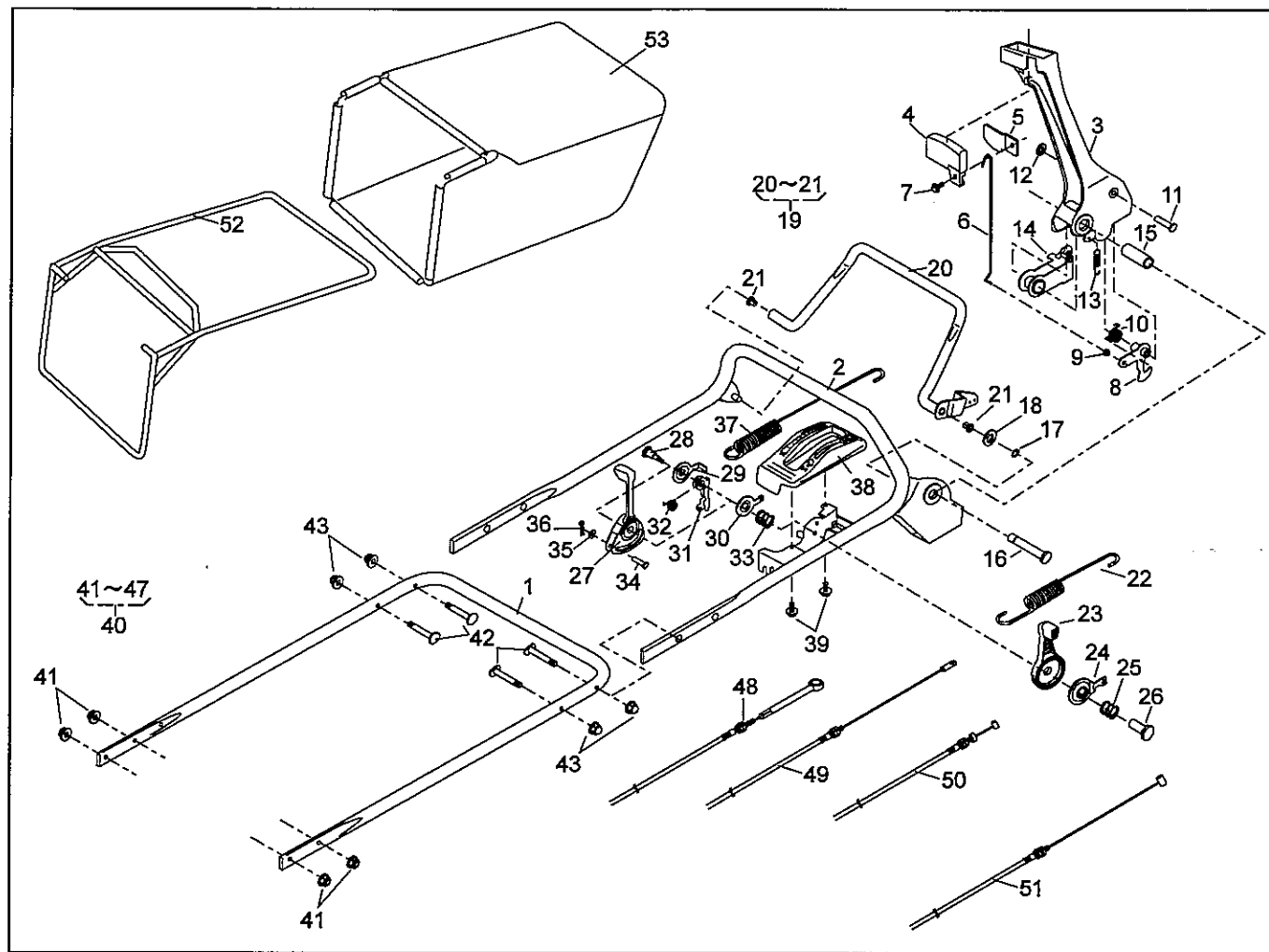


PARTS LIST

MODEL : SLM5360HXA-HST (Production 2004)

46014-***

REF. No.	PARTS No.	PARTS NAME	HST		2/2	Dec.24,2004
			Q'TY INCLUDING	PRICE()		
29	61024 142	SPACER	3			
30	71067 106	BRAKE ASSY	1			
31	31057 196	HEXAGON BOLT	1			
32	671V 1000	CONICAL SPRING WASHER	1			
33	91097 101	UNIVERSAL JOINT	1			
34	812V 2000	C-SNAP RING FOR SHAFT	1			
35	717B 0418	PARALLEL PIN	1			
36	64014 341	SHAFT	1			
37	91049 126	CONNECTOR	1			
38	68036 280	WASHER	1			
39	816V 0800	E-SNAP RING	1			
40	36065 438	COVER	1			
41	342L 0616	FLANGE BOLT TAPPING	1			
42	51116 149	HANDLE BRACKET(L)	1			
43	51116 150	HANDLE BRACKET(R)	1			
44	31057 255	HEXAGON BOLT	4			
45	512L 0800	HEXAGON NUT	4			
46						
47						
48						
49						
50	71008 378	GEAR CASE ASSY (HST:Ver.2004)	1			
51	36046 150	SAFETY GUARD	1			
52	11012 126	HANGER BAND	2			
53	711V 0522	SPRING PIN	2			
54	569L 0600	FLANGE NYLON NUT	2			
55						
56	8854	ENGINE:HONDA GXV160	1			

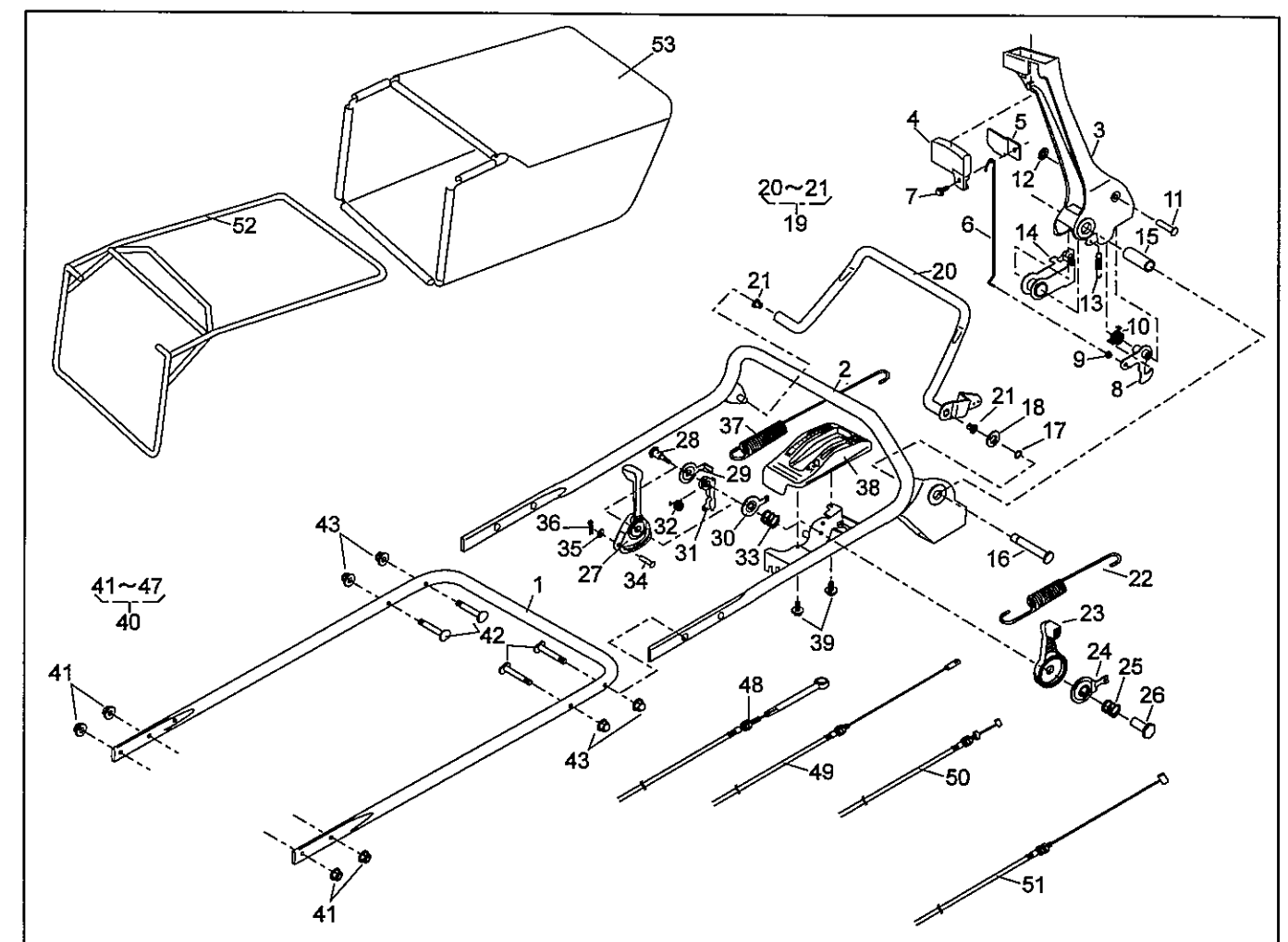


PARTS LIST

MODEL : SLM5360HXA-HST (SARP)

46014-***

REF. No.	PARTS No.	PARTS NAME	HST		PRICE()	RECOMM.(%) Lot.100	REMARKS
			QTY INCLUDING				
1	51027 249	HANDLE	1				
2	51027 250	HANDLE	1				
3	11095 172	LEVER(BBC)	1				
4	36110 102	BUTTON	1				
5	11049 109	SLIDE PLATE	1				
6	64014 336	SHAFT	1				
7	335N 0612	FLANGE BOLT	1				
8	71203 135	ARM C.P.	1				
9	76007 183	BUSH	1				
10	68013 371	SPRING	1				
11	31056 127	GIB-HEADED PIN	1				
12	576V 0600	PUSH NUT	1				
13	68013 372	SPRING	1				
14	11109 111	LINK	1				
15	61023 190	SLEEVE	1				
16	64014 337	SHAFT	1				
17	812V 0800	C-SNAP RING FOR SHAFT	1				
18	613L 0800	WASHER	1				
19	71161 114 09	LEVER ASSY	1				
20		LEVER	1				
21	76007 131	BUSH	2				
22	68013 376	SPRING	1				
23	91010 169	THROTTLE LEVER(GXV120/GXV160)	1				
24	61003 113	THRUST PLATE	1				
25	68013 356	SPRING	1				
26	31058 168	NUT	1				
27	11095 162	LEVER(HST)	1				
28	31057 249	HEXAGON BOLT	1				



PARTS LIST

MODEL : SLM5360HXA-HST (SARP)

46014-***

REF. No.	PARTS No.	PARTS NAME	HST		PRICE()	RECOMM.(%) Lot.100	REMARKS
			QTY INCLUDING				
29	61003 118	THRUST PLATE	1				
30	11049 108	SLIDE PLATE	1				
31	11109 110	LINK	1				
32	68013 369	SPRING	1				
33	68013 356	SPRING	1				
34	31056 126	GIB-HEADED PIN	1				
35	613L 0600	WASHER	1				
36	733L 0600	SNAP PIN	1				
37	68013 375	SPRING	1				
38	71900 811	COVER ASSY	1				
39	470L 0514	(+)TAPPING SCREW	2				
40	71900 847	BOLT SET	1				
41	569L 0800	FLANGE NYLON NUT	4				
42	31057 256	BOLT	4				
43	583L 0800	FLANGE CAP NUT	4				
44							
45							
46							
47	68028 103	WIRE BAND	2				
48	91003 171	CONTROL CABLE(HST-THROTTLE)	1				
49	91003 172	CONTROL CABLE(HST-NEUTRAL)	1				
50	91001 329	THROTTLE WIRE(GXV120/GXV160)	1				
51	91003 169	CONTROL CABLE(BBC)	1				
52	11062 178	FRAME C.P.	1				
53	36098 136	GRASS BAG C.P.(BLACK)	1				
54							
55							
56							